



# CARTEROIL

## Construction Equipment LUBRICATION GUIDE

### HYDRAULIC SYSTEM

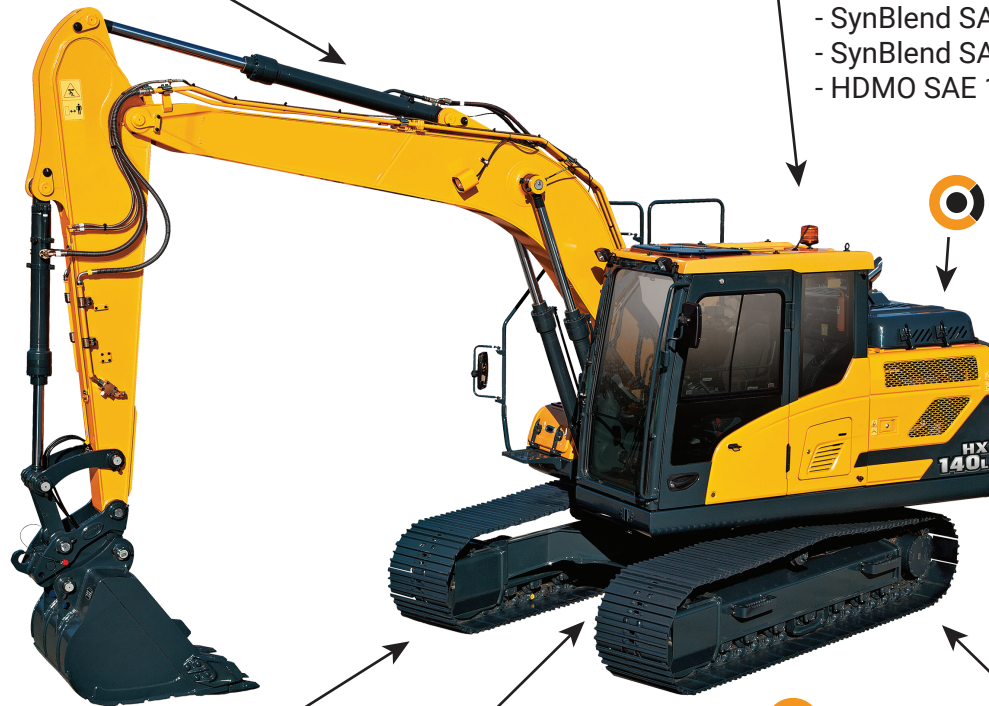
- Hydraulic Oil ISO 68 (AW, R&O, 5000Hrs)
- Drive Train Fluid SAE 10W (TO-4)

### ENGINE MOTOR OIL

- Full Synthetic SAE 5W40 (API CK-4/SN.TBN 9)
- SynBlend SAE 15W40 (API CJ-4/SN. TBN9)
- SynBlend SAE 10W30 (API CJ-4/SN. TBN8)
- SynBlend SAE 15W40 (API CJ-4/SN. TBN8)
- HDMO SAE 15W40 (API CI-4/SL, CI4 Plus TBN10)



Private Labeling Available



### ANTIFREEZE - COOLANT

- Antifreeze/Coolant, Concentrate (Red)
- Antifreeze/Coolant, 50% - 50% (Red)

### WHEEL BEARINGS GREASE POINTS

- HT High Temperature No. 2 (RED)
- Lithium Molly EP No.2 (Grey)

### DIFFERENTIAL / GEAR

- Drive Train Fluid SAE 50 (TO-4)
- Full Synthetic SAE 75W90 (API GL-5/MT-1)
- Drive Train Fluid SAE 50 (TO-4)

### TRANSMISSION

- Drive Train Fluid SAE 30 (TO-4)
- Drive Train Fluid SAE 10W (TO-4)

\* Consult the engine manufacturer for service interval recommendations.

\*\* The general description, recommended uses, application data and statements are guidelines. Because the product may be used for a variety of applications, over which Carteroil USA Inc. has no control. Carteroil USA Inc. assumes no liability for incidentals, consequential, or direct damage of any kind, regardless of causes, including negligence. For more information please visit us at: [www.carteroilusa.com](http://www.carteroilusa.com)